

Avila Beach CSD Wastewater Treatment Facility

Monthly report due last day of following month
Annual report due January 30

Month: MAY 2026

Date	Daily Flow (MGD)			Effluent Monitoring		
	Total	Max (gpm)	Avg (gpm)	Biweekly Total Coliform	Biweekly Fecal Coliform	Daily Chlorine Residual
1	0.048903	101	34			0.00
2	0.057421	103	40			0.10
3	0.053034	113	37			0.10
4	0.047525	104	42			0.00
5	0.360166	104	66	<1.8	<1.8	0.00
6	0.037419	112	68			0.00
7	0.043088	112	62	17	<1.8	0.00
8	0.051260	91	36			0.00
9	0.065299	114	45			0.00
10	0.061256	107	43			0.00
11	0.046209	112	40			0.00
12	0.039788	114	28	240	6.8	0.00
13	0.039528	114	27			0.00
14	0.039018	76	27	<1.8	<1.8	0.00
15	0.051897	102	36			0.00
16	0.060538	103	42			0.00
17	0.058493	108	41			0.00
18	0.045680	74	32			0.00
19	0.047631	44	33	<1.8	<1.8	0.00
20	0.039934	68	28			0.00
21	0.029248	66	20	<1.8	<1.8	0.00
22	0.037342	61	26			0.00
23	0.065831	120	46			0.00
24	0.073486	125	51			0.00
25	0.066496	131	46			0.33
26	0.048605	63	34	<1.8	<1.8	0.00
27	0.044898	61	31			0.00
28	0.037553	51	26	49		0.00
29	0.055883	66	39			0.00
30	0.066492	165	46			0.00
31	0.064352	92	45			0.00
Min	0.029248	44	20	<1.8	<1.8	0.00
Mean	0.060783	96.0	39.3	38.3	<1.8	0.02
Max	0.360166	165	68	240	6.8	0.33
Total	1.884272	<i>Effluent daily (dry weather) flow NTE 0.2 MGD (mean).</i>				

Effluent and Influent Monitoring					
Date	Weekly Effluent BOD (24 HC)	Weekly Effluent TSS (24 HC)	Weekly Influent BOD (24 HC)	Weekly Influent TSS (24 HC)	Monthly Effluent Oil & Grease (Grab)
5/7/26	5.8	<5.0	370	330	
5/14/26	<4.0	<5.0	400	300	<6.4
5/21/26	<4.0	<5.0	290	200	
5/28/26					
Min	<4.0	<5.0	290	200	<6.4
Mean	<4.0	<5.0	353.3	276.7	<6.4
Max	5.8	<5.0	400	330	<6.4
BOD Removal: 100.0%			TSS Removal: 100.0%		

Effluent Monitoring				
Date	Weekly Set. Solids (Grab)	Weekly Turbidity (Grab)	Weekly pH (Grab)*	Weekly Temp °F (Grab)
5/7/26	<0.1	1.3	7.47	70.3
5/14/26	<0.1	0.95	7.28	71.0
5/21/26	<0.1	0.70	7.23	71.7
5/28/26			7.30	
Min	<0.1	0.70	7.23	70.3
Mean	<0.1	0.98	7.32	71.0
Max	<0.1	1.30	7.47	71.7

*Effluent pH samples were collected on 5/8, 5/15, 5/22, and 5/29.

Influent Brine Received	
Date	Volume (Gallons)
N/A	N/A

Sludge Removal	
Date	Gallons
5/5/26	4,000
5/8/26	4,800

Effluent Limits				
Parameter	Units	Monthly Avg	Weekly Avg	Daily Max
BOD	mg/L	40	60	90
Suspended Solids	mg/L	40	60	90
Oil and Grease	mg/L	25	40	75
Turbidity	NTU	75	100	225
Total Coliform	MPN/100 mL	7 Sample Median: 23		
		More than once in 30 days: 240		
		Daily Maximum: 2,400		
Chlorine Residual	mg/L	6 Month Median: 0.3		1.2
pH	pH units	Between 6.0 - 9.0		
Settleable Solids	mL/L	1.0	1.5	3.0
BOD/TSS Removal	%	≥ 75%	***	***

I certify under penalty of perjury that the foregoing is true and accurate and that the sampling procedure and analysis used are as specified in the Waste Discharge Order for this facility.

SIGNATURE: _____

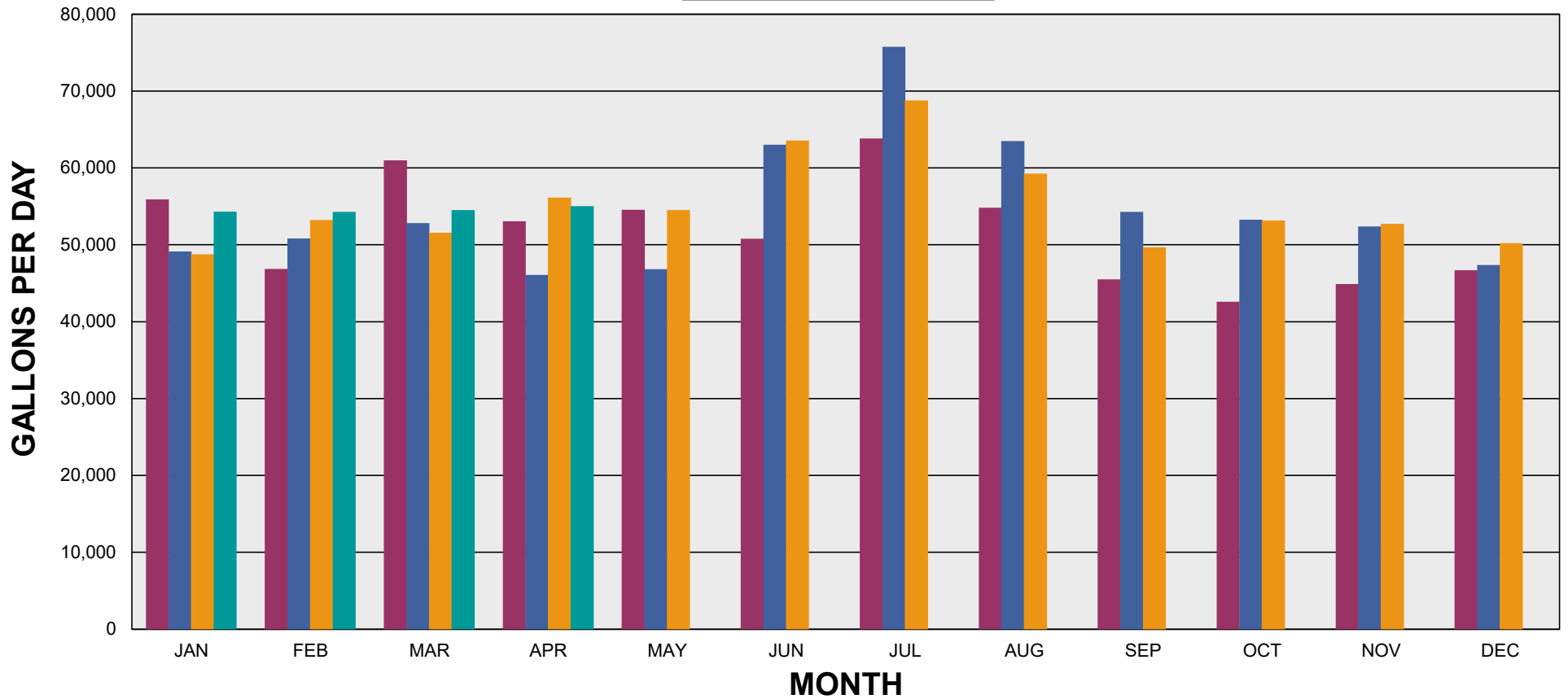
DATE: _____

PRINTED NAME: _____

TITLE: _____

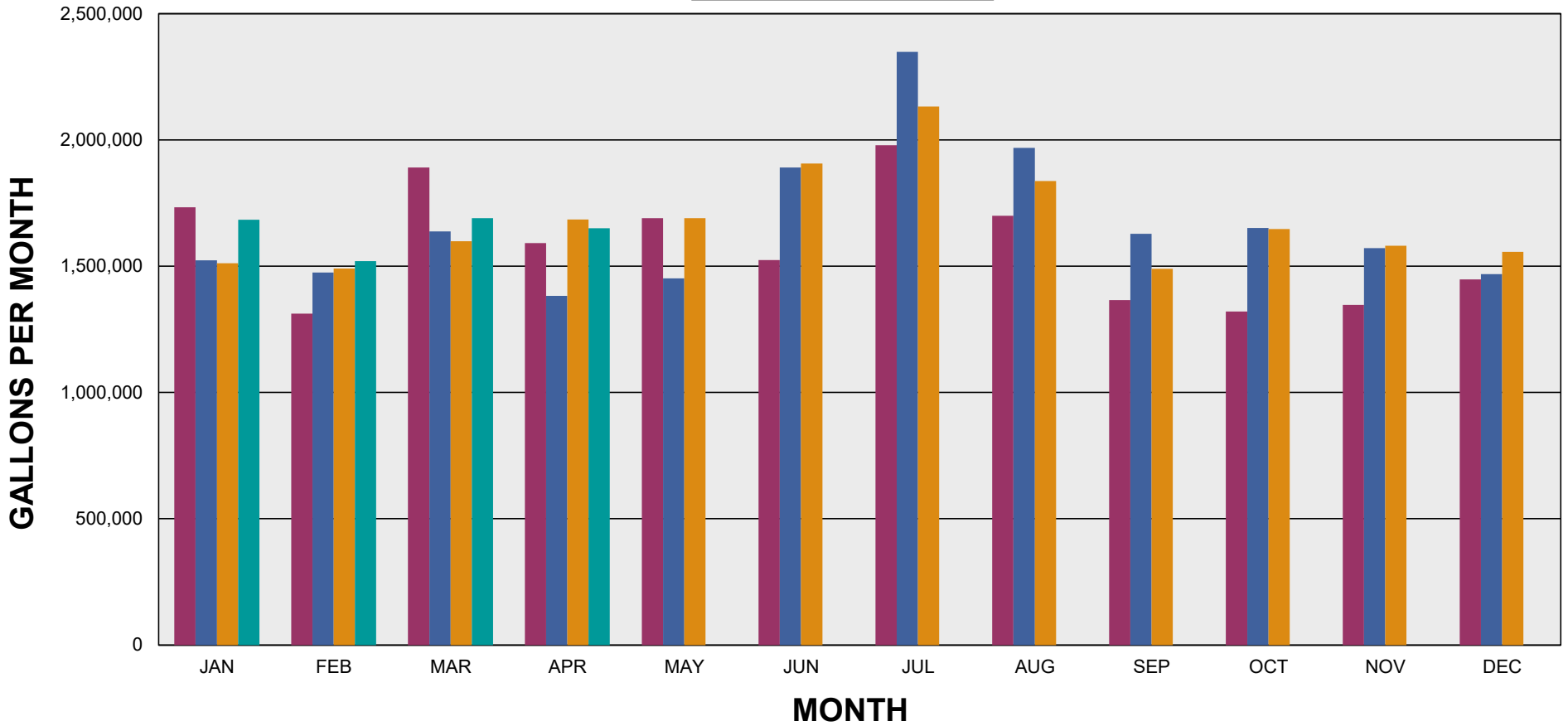
ABCSD AVERAGE DAILY WWTP EFFLUENT FLOW (2023 - 2026)

2023 2024 2025 2026



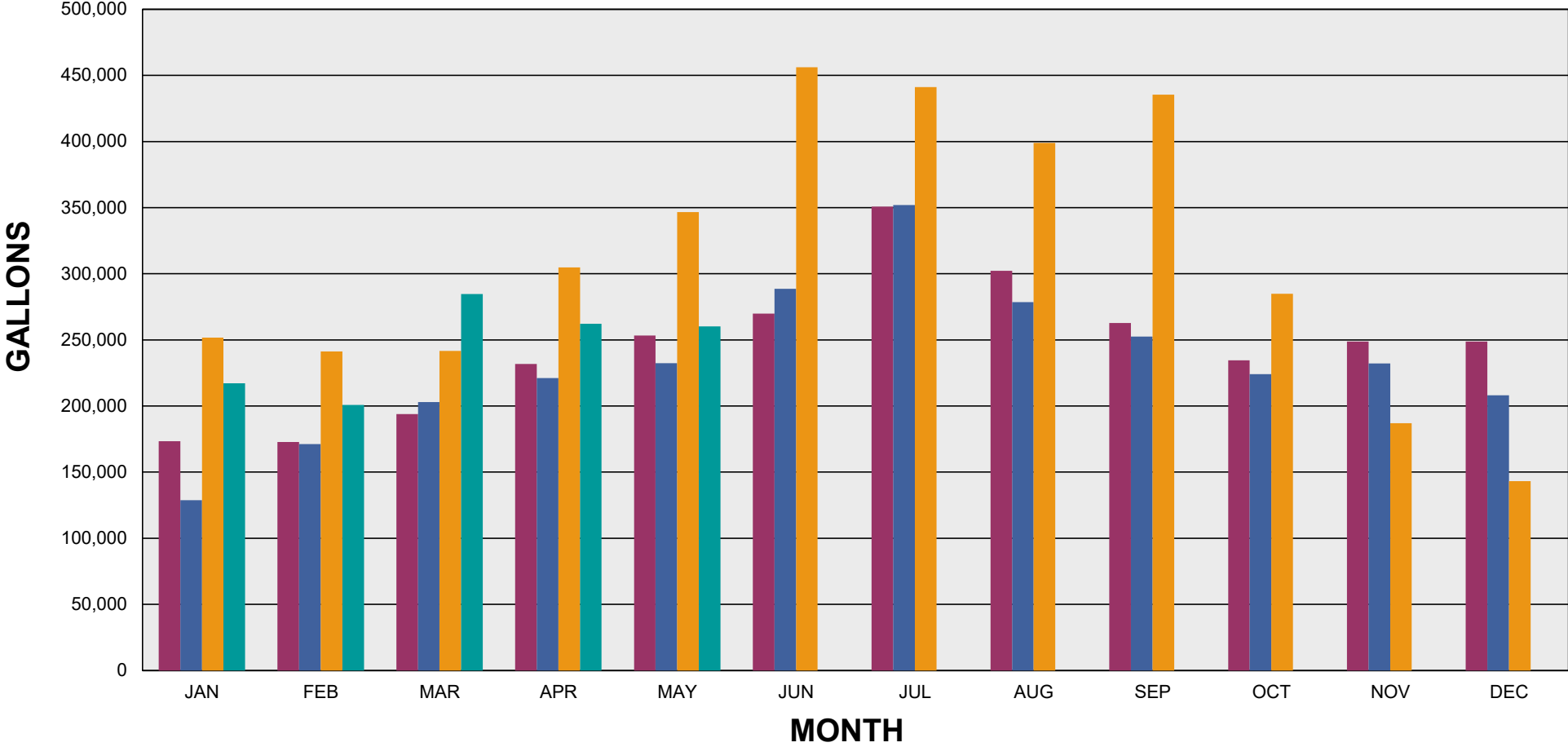
ABCSD MONTHLY TOTAL WWTP EFFLUENT FLOW (2023 - 2026)

■ 2023 ■ 2024 ■ 2025 ■ 2026



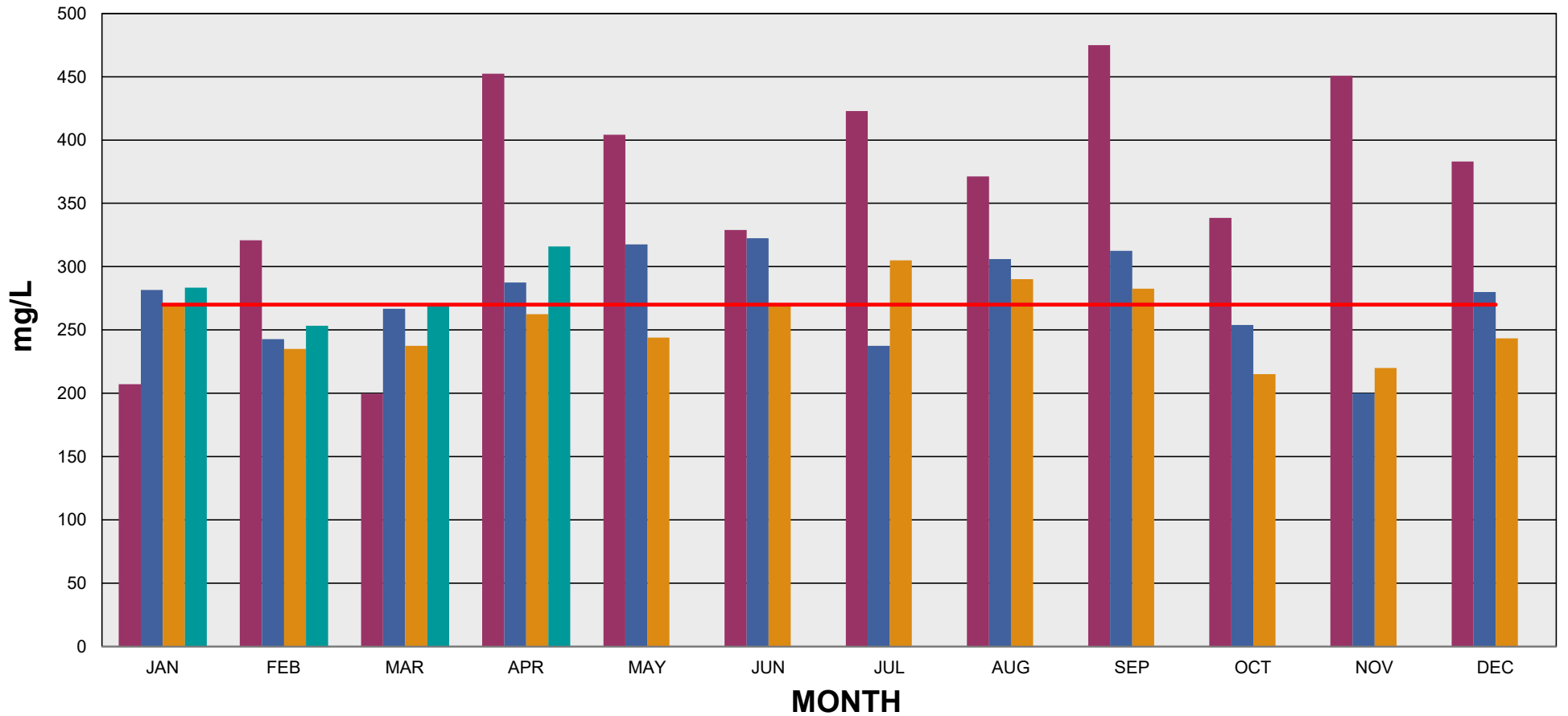
PORT SAN LUIS MONTHLY TOTAL FLOW (2023 - 2026)

2023 2024 2025 2026



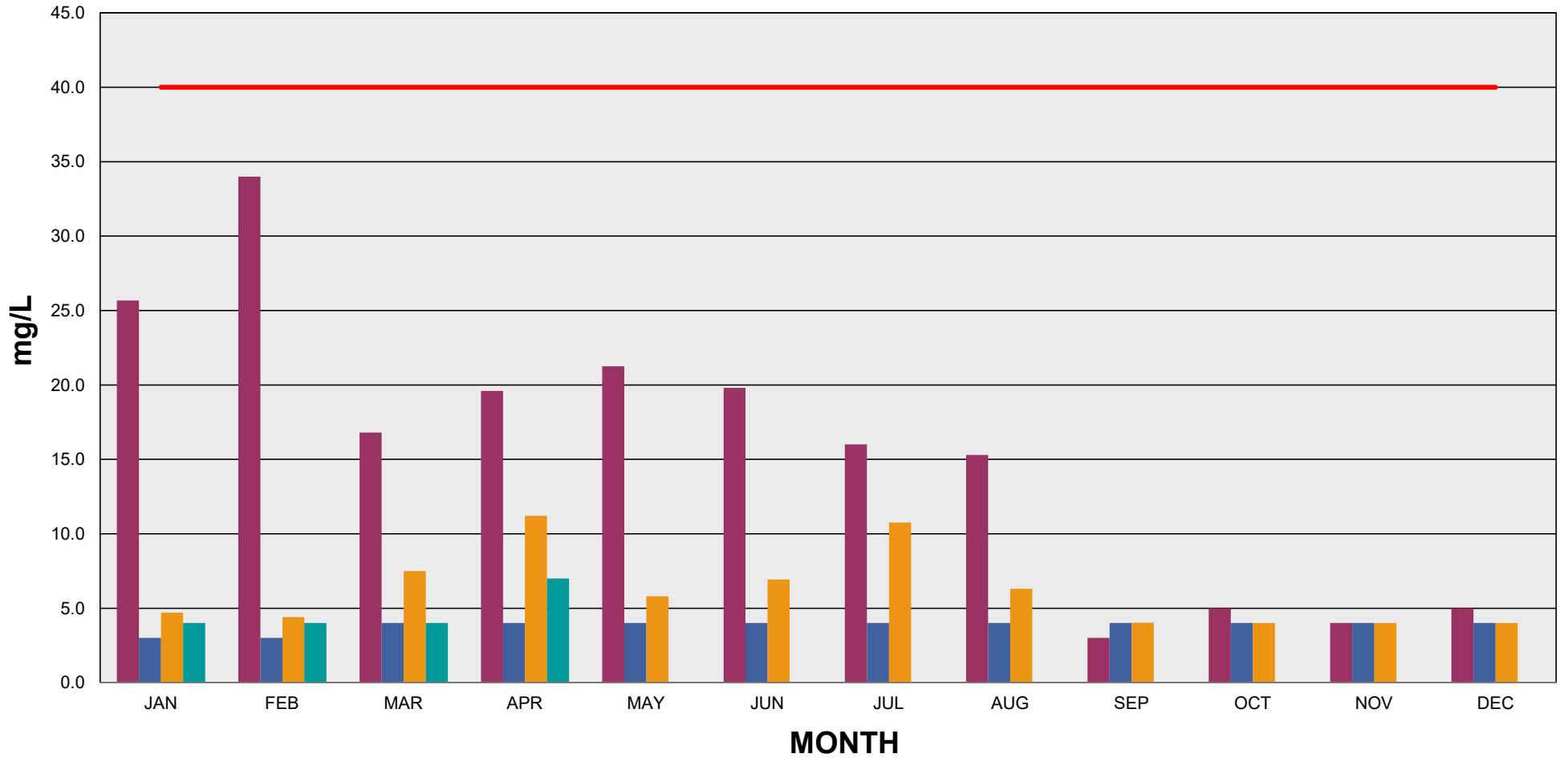
ABCSD MONTHLY AVERAGE INFLUENT BOD (2023 - 2026)

2023 2024 2025 2026 WWTP Design



ABCSD MONTHLY AVERAGE EFFLUENT BOD (2023 - 2026)

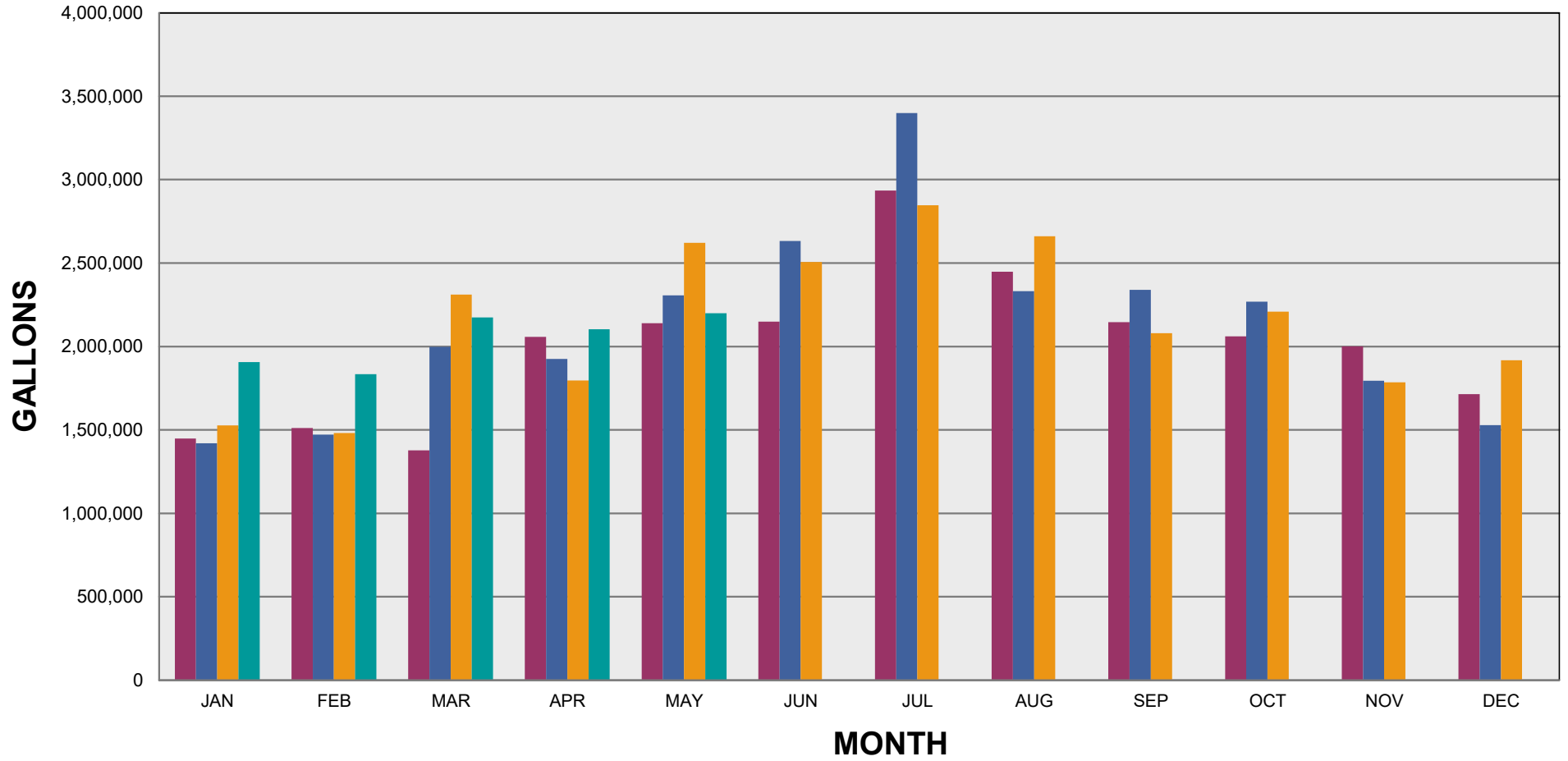
2023 2024 2025 2026 30 Day Average Limit



Note: Non Detect (ND) values are represented on the graph at their reporting limit.

ABCSD MONTHLY WATER PURCHASED FROM LOPEZ (2023 - 2026)

2023 2024 2025 2026



ABCSD MONTHLY WATER SOLD (2023 - 2026)

■ 2023 ■ 2024 ■ 2025 ■ 2026

